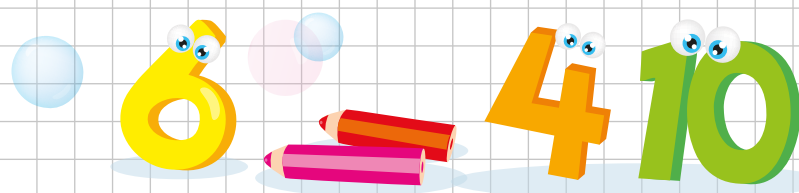


M Calcola le sottrazioni in riga.

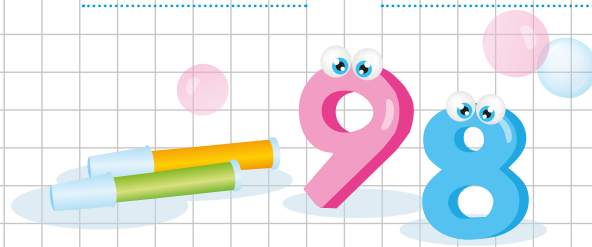
$2.740 - 128 =$	$1.450 - 1.230 =$	$348 - 124 =$
$1.344 - 524 =$	$7.360 - 721 =$	$1.250 - 321 =$
$4.220 - 136 =$	$1.520 - 430 =$	$520 - 148 =$
$2.350 - 1.840 =$	$3.200 - 120 =$	$321 - 184 =$
$5.780 - 1.240 =$	$1.500 - 240 =$	$224 - 116 =$

M E ora in colonna.



$23.540 -$ $1.236 =$	$3.748 -$ $1.152 =$	$42.340 -$ $2.750 =$	$3.530 -$ $1.240 =$	$12.740 -$ $1.824 =$
$7.257 -$ $1.240 =$	$32.556 -$ $1.248 =$	$3.744 -$ $2.541 =$	$12.577 -$ $8.241 =$	$36.540 -$ $4.250 =$

M Trova i numeri che mancano nei quadretti.



$1. \square 62 -$ $156 =$ 1.106	$6.352 -$ $6 \square 8 =$ 5.694	$7.89 \square -$ $892 =$ 6.998	$12.000 -$ $\square 582 =$ 5.418
---	---	--	--